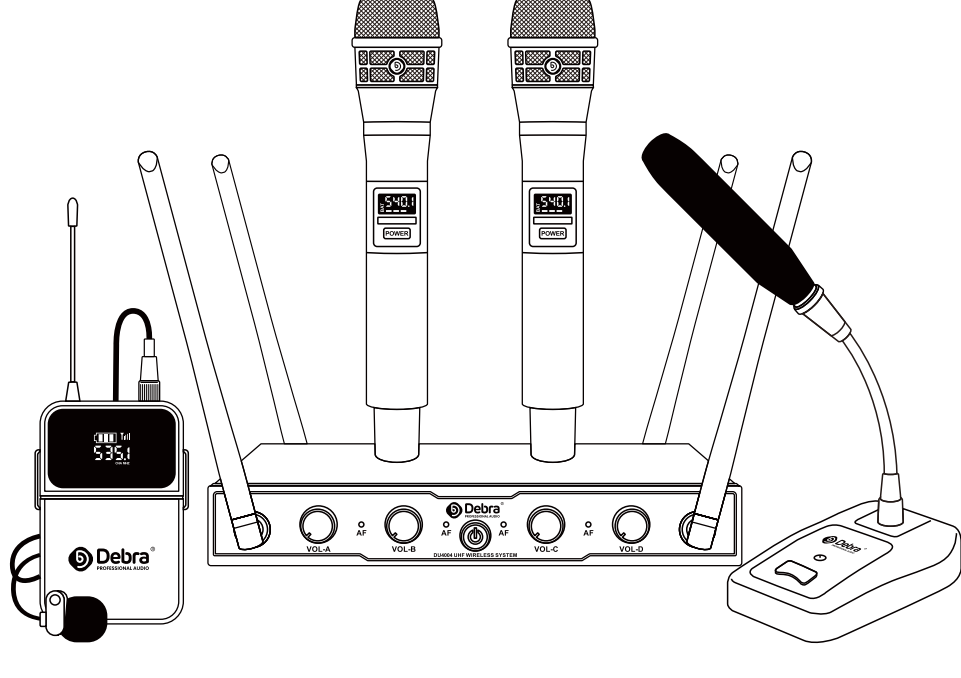


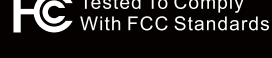
PROFESSIONAL UHF 4 CHANNEL WIRELESS MICROPHONE



- Product User Manual -

If you still have questions about the use, please contact our professional after-sales personnel.

- Instagram: D Debra Audio
- YouTube: D Debra Audio
- Facebook: debra-audio@hotmail.com
- E-mail: debra-audio@hotmail.com



Welcome

Thank you for purchasing the AU400 wireless microphone system. Please read this manual thoroughly to get the most out of the product and ensure long-term, trouble-free use. After reading this manual, keep it readily available for future reference.

WIRELESS FREEDOM, EASY TO USE.

Jumping to wireless should be a liberation, not a challenge. Combining professional-quality sound with simple setup and an intuitive interface, the D Debra Audio Wireless System delivers out-of-the-box performance you can count on. Precision manufactured and available in a variety of handheld, lavalier, headpiece configurations, it's the most convenient way to have a stage, church, conference, party, karaoke.

Included Accessories

- | | |
|---|--|
| [4 Handheld Microphones Configure] <ul style="list-style-type: none">• Receiver *1• Handheld microphones *4• Audio Cable *1• Power plug *1• Owner's Manual *1 | [2 Handheld & 2 Bodypack Configure] <ul style="list-style-type: none">• Receiver *1• Handheld Microphones *2• Bodypack Transmitter *2• Lavalier Microphone *2• Headset Microphone *2• Audio Cable *1• Power plug *1• Owner's Manual *1 |
| [4 Bodypack Configure] <ul style="list-style-type: none">• Receiver *1• Bodypack Transmitter *4• Lavalier Microphone *4• Headset Microphone *4• Audio Cable *1• Power plug *1• Owner's Manual *1 | [4 Gooseneck Configure] <ul style="list-style-type: none">• Receiver *1• Gooseneck Microphone *4• Audio Cable *1• Power plug *1• Owner's Manual *1 |

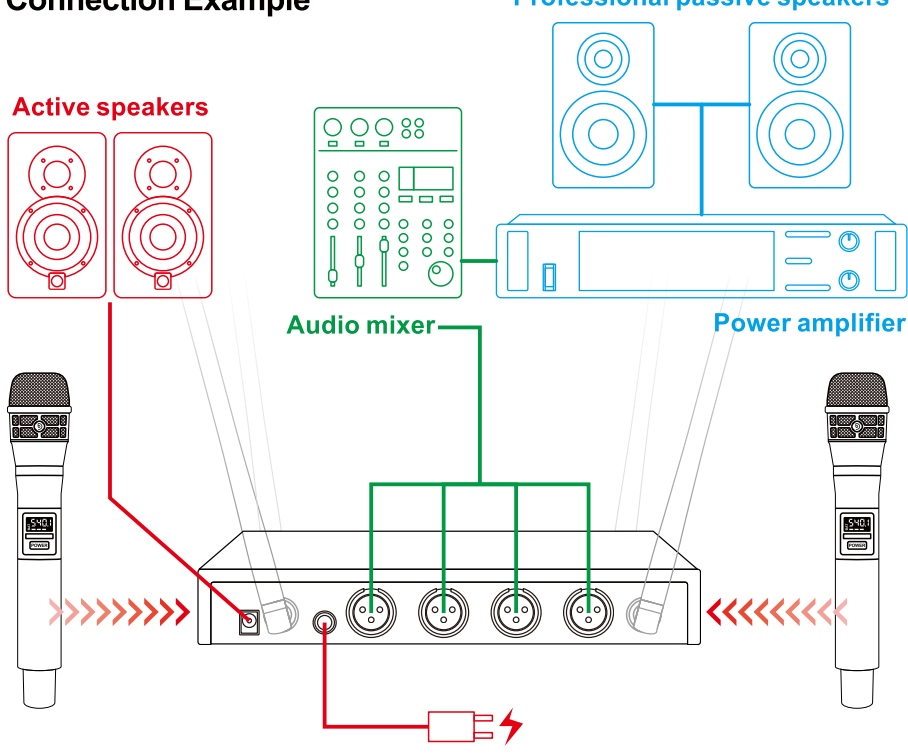
Note: The actual list will be matched according to the actual situation, and the actual item received shall prevail.

Quick Start Guide:

STEP 1 Connecting speakers, microphones, instruments, etc.

1. Turn off the power of all speakers, instruments, and other devices to be connected to the wireless microphone system.
2. Connect speakers, microphones and instruments referring to the connection example below.

Connection Example



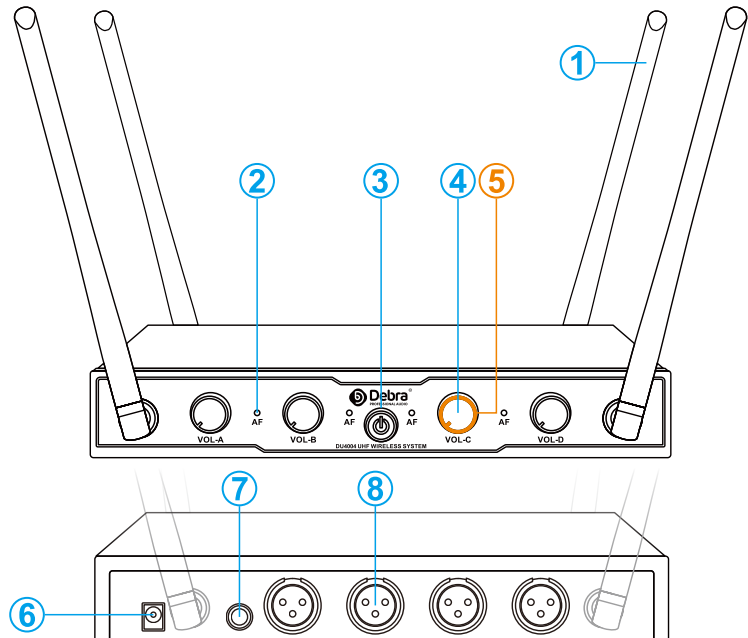
NOTE: To prevent whistling or noise, please turn down the volume of the microphone system, speakers, mixer and other equipment to the minimum.

STEP 2 Use the microphone system correctly.

1. Make sure all switches, including the power switch, are not pressed.
2. Insert the 12V DC power plug. And the microphone or the bodypack insert AA batteries.
3. Turn the volume knob all the way to the left (minimum).
4. Make sure the volume of any other device is set to minimum.
5. Power on the connected devices in the following order: audio devices such as wireless microphones, then the power switch for the mixer, then the powered monitor speakers, and finally the switch for the handheld microphone or bodypack. Note Follow this sequence to avoid loud, unexpected noise from the speakers. When the power is turned off, the sequence is reversed.
6. Set the volume knob to the appropriate position as required.
7. Speak into the microphone, then adjust the volume of the other device.
8. If you hear no sound, or if you want to adjust the volume, follow the instructions in the box below.

FUNCTION INTRODUCTION

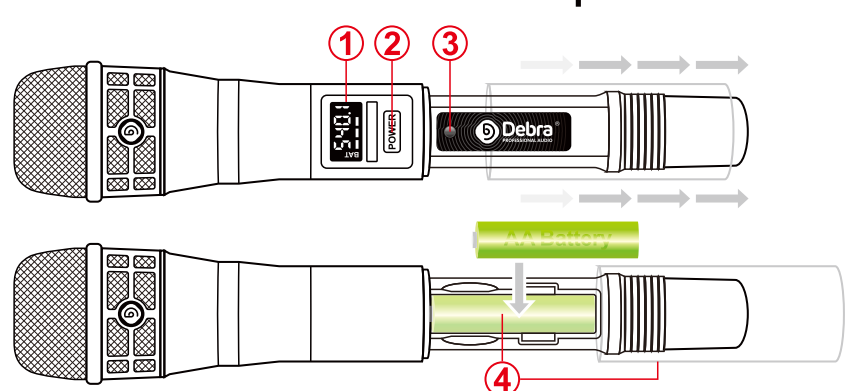
DU-4004 Wireless receiver



- 1. The receiver's signal antenna.**
Try to keep the antenna vertical for better signal reception. When using, please put the antenna up, and do not cross each other.
- 2. Audio signal strength indicator.**
- 3. Power ON/OFF Button ang Power light.**
For turning the power of the unit to power-on state and off state. The power light turns light, indicating that it is working.
NOTICE: Rapidly switching the switch between on and standby in succession can cause the mixer to malfunction. After switching the switch to standby, wait for at least six seconds before turning it on again.
- 4. Volume level knobs.**
Set the volume balance between each channel.
- 5. RF signal light.**
When the wireless microphone is turned on, the knob light ring lights up, indicating that the wireless signal connection is normal.
- 6. Power interface.**
- 7. Mixed audio output(AUX outputs).**
4 channel sound mix output.
- 8. XLR balanced independent output.**
Independent output XLR interface for each channel.

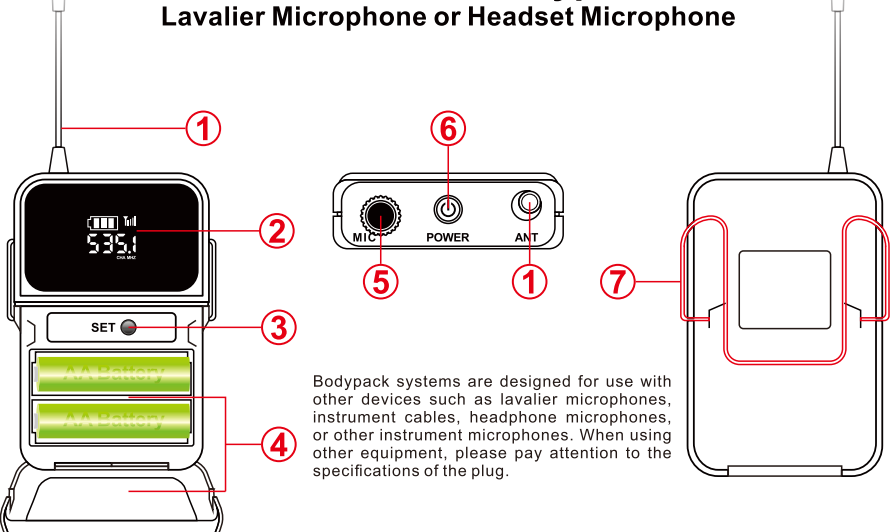
FUNCTION INTRODUCTION

DU-4004 Hand held microphone



- 1. Information display.**
Displays the current battery level and frequency.
- 2. Power ON/OFF Button**
- 3. Frequency selection button.**
Press this button to switch the frequency and automatically match the receiver to avoid interference from nearby signal frequencies.
- 4. Battery Compartment and Battery Cover.**
2*AA batteries provide up to 4-8 hours of continuous use(also supports AA rechargeable batteries)

DU-4004 The Bodypack Lavalier Microphone or Headset Microphone

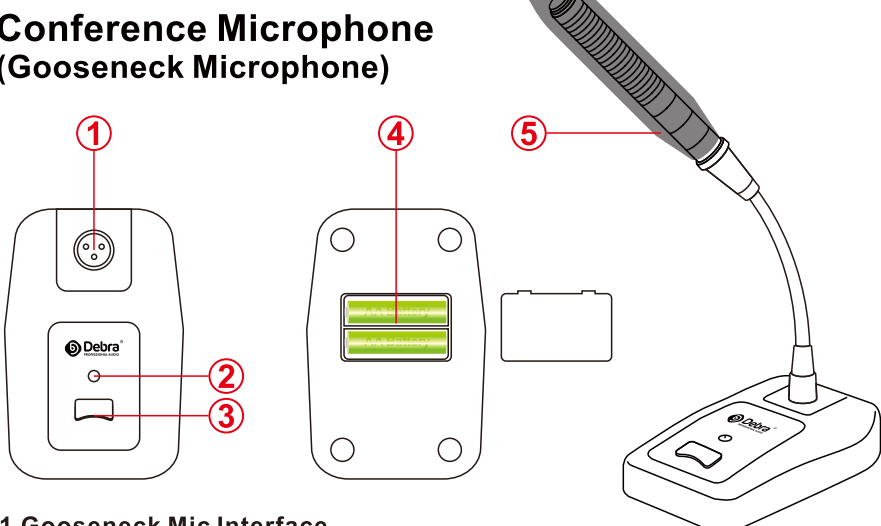


Bodypack systems are designed for use with other devices such as lavalier microphones, instrument cables, headphone microphones, or other instrument microphones. When using other equipment, please pay attention to the specifications of the plug.

FUNCTION INTRODUCTION

- 1. Signal antenna.**
Please keep it unobstructed during use to achieve the best launch effect.
- 2. Information display.**
Displays the current battery level and frequency.
- 3. Frequency selection button.**
Press this button to switch the frequency and automatically match the receiver to avoid interference from nearby signal frequencies.
- 4. Battery Compartment and Battery Cover.**
2*AA batteries provide up to 4-8 hours of continuous use(also supports AA rechargeable batteries)
- 5. Microphone Input**
3.5mm aux audio input. You can plug in a lavalier microphone or a headset microphone. (Note that only a mono microphone plug will work.)
- 6. Power ON/OFF Button**
- 7. Bodypack back clip**

Conference Microphone (Gooseneck Microphone)



- 1. Gooseneck Mic Interface.**
For XLR connection gooseneck Mic, please connect according to the marked direction.
- 2. Frequency selection button.**
Press this button to switch the frequency and automatically match the receiver to avoid interference from nearby signal frequencies.
- 3. Power ON/OFF Button.**
- 4. Battery Compartment and Battery Cover.**
2*AA batteries provide up to 4-8 hours of continuous use(also supports AA rechargeable batteries)
- 5. Microphone sponge**

USE SUGGESTION TIPS

- Maintain a line-of-sight between the transmitter and receiver antennas. Keep the receiver and antennas away from large metal objects.
- Avoid placing the receiver near computers or other RF generating equipment.
- Point the receiver antennas straight up.
- Avoid placing the receiver in the bottom of an equipment rack unless the antennas are remotely located.

TROUBLESHOOTING

Check the following items before contacting a D Debra dealer. If the symptoms are not improved, contact us.

NO sound, the receiver's RF light does not light up.

- Make sure the transmitter power switch is on and the receiver is plugged in. (Push up the switch of the hand-held microphone)
- Check that the battery is installed. And make sure the battery is fully charged.
- Check that the frequency on the transmitter matches the frequency on the receiver.

No sound, the receiver's RF light is on.

- Turn up the receiver audio volume control. Also turn up the volume control of other connected devices.
- Check that the connection between the receiver and the mixer or other equipment is correct.

Receiver signal is noisy or contains extraneous sounds with transmitter on.

- Check if the battery is low.
- Check for other sources of RF interference causing interference.
- Change the other frequency channel.
- If using a guitar or other musical instrument, check the connections. If multiple transmitters are used together, it is possible that multiple transmitters will operate on the same frequency. Find the same frequency point, close the others, and only one is left.
- Signal may be too weak. Reposition the antenna. Move them closer to the transmitter if possible.

Noise from receiver with transmitter off.

- Check for other sources of RF interference causing interference.
- It is recommended to replace the audio cable with a better quality.
- Test other equipment connected to the receiver for problems.

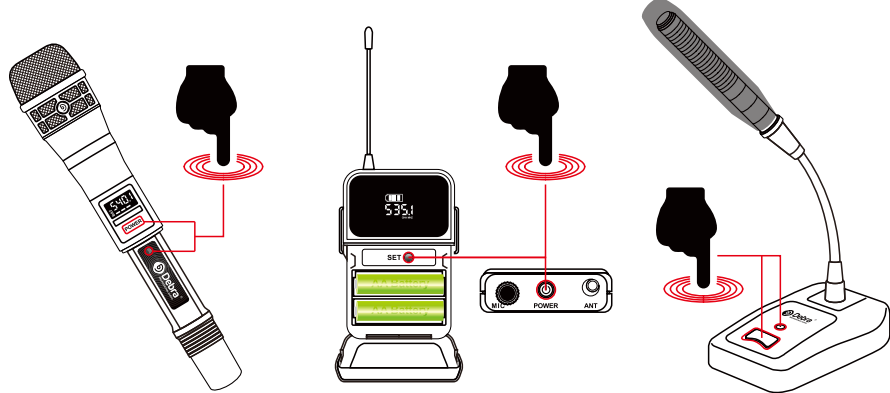
Momentary loss/stop of sound as transmitter is moved around performing area.

- Reposition the receiver and perform another "drill" test and observe the RF indicator. If audio loss persists, mark these "dead spots" in the performance area and avoid them during the performance.

DU-4004 TECHNICAL PARAMETERS

The transmitter and receiver are not paired, what should I do?

- First, turn off the transmitter and receiver.
- Open the transmitter battery compartment, hold the switch and frequency switch buttons at the same time until the screen flashes. (As shown below)
- Then turn on the power of the receiver, you can see the channel volume knob corresponding to the transmitter flashes briefly.
- Press the frequency switch button of the transmitter again, and the frequency matching is successful.



SYSTEM METRICS

Frequency range: 510-590(A actual product frequency bands vary by country)
(some countries may have different frequencies due to customized frequency, please refer to the actual situation)
Total number of channels: 64CH
Carrier use distance: 50-80m
Frequency width: 50MHz
Carrier stability: $\pm 5\text{PPs} \leq 10\text{KHz}$
Artifact interference ratio: $> 80\text{dB}$
Sensitivity: -105dBm
Total Distortion: $< 0.5\%$ @1KHz

WIRELESS TRANSMITTER

Receiving mode: CPU control signal reception
+ pilot identification reception
Frequency stability: $\pm 4\text{KHz}$
Display mode: LCD
Microphone Type: Handheld - Dynamic;
Bodypack - Condenser;
Conference - Condenser

WIRELESS RECEIVER

Signal to noise ratio: $\geq 50\text{dB}$
Frequency stability: $\pm 5\text{KHz}$
Receiving mode: CPU control signal reception
+ pilot identification reception
Display mode: LCD
Power supply: 12V-DC, 1000Ma
Audio output interface: XLR balanced output/6.35mm mixed output

CAUTIONS AND WARNINGS



CAUTION: To reduce the risk of electric shock, do not remove cover (or back). No user-serviceable parts inside. Only refer servicing to qualified service personnel.

- ⚠ The lighting flash & arrowhead symbol within an equilateral triangle is intended to alert you to the presence of danger.
- ⚠ The exclamation point within an equilateral triangle is intended to alert you to the presence of important operating and servicing instructions.

WARNING

- 1. Read Instructions** -- All the safety and operating instructions should be read before the appliance is operated.
- 2. Retain instructions** -- The safety and operating instructions should be retained for future reference.
- 3. Read Warnings** -- All warnings on the appliance and in the operating instructions should be adhered to.
- 4. Follow Instructions** -- All operating and use instructions should be followed.
- 5. Attachments** -- Do not use attachments not recommended by the product manufacturer as they may cause hazards.
- 6. Water and Moisture** -- Do not use this unit near water. For example, near a bathtub or in a wet basement and the like.
- 7. Carts and Stands** -- The appliance should be used only with a cart or stand that is recommended by the manufacturer.
- 7-A.** An appliance and cart combination should be moved with care. Quick stops, excessive force, and uneven surfaces may cause an overturn.
- 8. Ventilation** -- The appliance should be situated so its location does not interfere with its proper ventilation. For example, the appliance should not be situated on a bed, sofa, rug, or similar surface that may block the ventilation slots.
- 9. Heat** -- The appliance should be situated away from heat sources such as radiator, heat registers, stoves, or other appliances (including amplifiers) that produce heat.
- 10. Power Sources** -- Precautions should be taken so that the grounding or polarization marked on the appliance is not defeated.
- 11. Grounding or Polarization** -- Precautions should be taken so that the grounding or polarization means of the appliance is not defeated.
- 12. Power Cord Protection** -- The power cord should be routed so that it cannot be stepped on or pinched by objects placed or resting on it. Pay special attention to the wires on plugs, convenience sockets, and where they exit the device.
- 13. Cleaning** -- Unplug the unit from the wall outlet before cleaning. Do not use liquid cleaners or aerosol cleaners. Use a damp or dry cloth for cleaning.
- 14. Power Lines** -- An outdoor antenna should be located away from power lines.
- 15. Nonuse Periods** -- The power cord of the appliance should be unplugged from the outlet when left unused for a long period of time.
- 16. Object and Liquid Entry** -- Care should be taken so that objects do not fall and liquids are not spilled into enclosure through openings.
- 17. Damage Requiring Service** -- The appliance should be serviced by qualified service personnel when:
17-A. The power supply cord or plug has been damaged; or
17-B. Objects have fallen into the appliance; or
17-C. The appliance has been exposed to rain; or
17-D. The appliance does not appear to operate normally or exhibits a marked change in performance; or
17-E. The appliance has been dropped, or the enclosure damaged.
- 18. Servicing** -- The user should not attempt to service the appliance beyond that described in the operating instructions. All other servicing should be referred to qualified service personnel.